



CURVE TEE E RIDUZIONI

TEES, BENDS AND REDUCERS
T.STÜCKE, BOGEN UND REDUZIERSTÜCKE
TÉS, COUDES ET RÉDUCTIONS
TES, CODOS Y REDUCCIONES

CURVE, TEE E RIDUZIONI

Tee, curve e riduzioni vengono ricavati da tubo elettrounito scordonato, le curve sono calibrate dopo la curvatura, al fine di ottenere una buona circolarità delle stesse. Sono successivamente intestate per ottenere una perfetta ortogonalità dei due piani.

Finitura:

NORMA DIN – lucida

NORMA SMS – satinata

NORMA ASTM - microbigliata

TEES, BENDS AND REDUCERS

The Tees and reducers are made from extrusion rolled tube, the bends are cauged after bending in order to obtain perfect roundness.

The bends are then faced in order to obtain perfect squareness.

Finish:

DIN RULES - polished

SMS RULES - satined

ASTM RULES - mat satined

T-STÜCKE, BOGEN UND REDUZIERSTÜCKE

“T” Stücke und Reduzierstücke werden aus gewalztem Rohr durch Spannung gebaut. Die Bögen werden nach der Biegung abgewägt, um eine bessere Rundheit zu erzielen. Später machen wir die Bezichtigung, um eine perfekte Rechtwinkligkeit zu haben.

Fertigdrehen:

DIN Standard – glanzpoliert

SMS Standard – satiniert

ASTM Standard – matt satiniert

TÉS, COUDES ET RÉDUCTIONS

Les Tés, les coudes et les réductions proviennent de tubes électro-unis sans cordon, les coudes sont calibrés après le cintrage afin d'obtenir un bonne circularité de ces derniers. Ensuite, ils sont aboutés afin que les deux plans soient parfaitement orthogonaux.

Finition:

NORMA DIN – polie

NORMA SMS – satinée

NORMA ASTM – microbillée

TES, CODOS Y REDUCCIONES

Las tes, los codos y reducciones se obtienen de tubos electrosoldados sin costura, los codos son calibrados después del curvado para obtener una buena circularidad de los mismos. Sucesivamente se acoplan para obtener una perfecta ortogonalidad de los planos.

Acabado:

NORMA DIN – polido

NORMA SMS – satinado

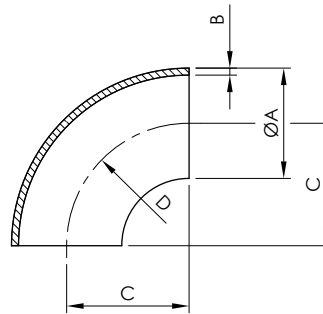
NORMA ASTM – con microbolas

Curva a saldare 90° DIN

90° DIN welding bend
 DIN 90° Schweißbogen
 Coude 90° à souder DIN
 Codo a soldar DIN 90°

art. 386

DN	A	B	C	D
10	12	1	26	26
15	18	1	35	35
20	22	1	40	40
25	28	1,5	50	50
32	34	1,5	55	55
40	40	1,5	60	60
50	52	1,5	70	70
65	70	2	80	80
80	85	2	90	90
100	104	2	100	100
125	129	2	185	185
150	154	2	215	215



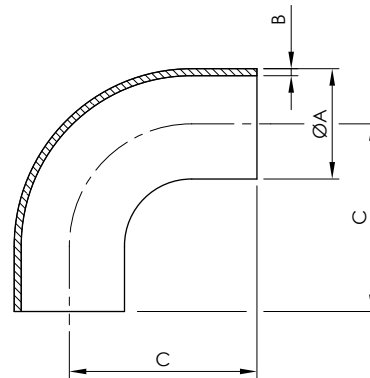
Ver. 04.18

Curva 90° a mandrinare DIN

90° DIN expanding bend
 DIN 90° Walzbogen
 Coude 90° à dudgeonner DIN
 Codo a mandrinar DIN 90°

art. 387

DN	A	B	C
15	18	1	47
20	22	1	52
25	28	1,5	70
32	34	1,5	78
40	40	1,5	85
50	52	1,5	97
65	70	2	110
80	85	2	123
100	101.6	2	140
100	104	2	140



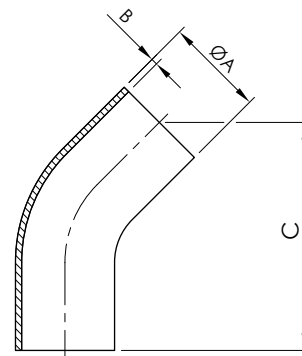
Ver. 04.18

Curva 45° a mandrinare DIN

45° DIN expanding bend
 DIN 45° Walzbogen
 Coude 45° à dudgeonner DIN
 Codo a mandrinar DIN 45°

art. 388

DN	A	B	C
15	18	1	60
20	22	1	65
25	28	1,5	73
32	34	1,5	83
40	40	1,5	89
50	52	1,5	103
65	70	2	108
80	85	2	120
100	101.6	2	151
100	104	2	151



Curva 180° a saldare DIN

180° DIN welding bend

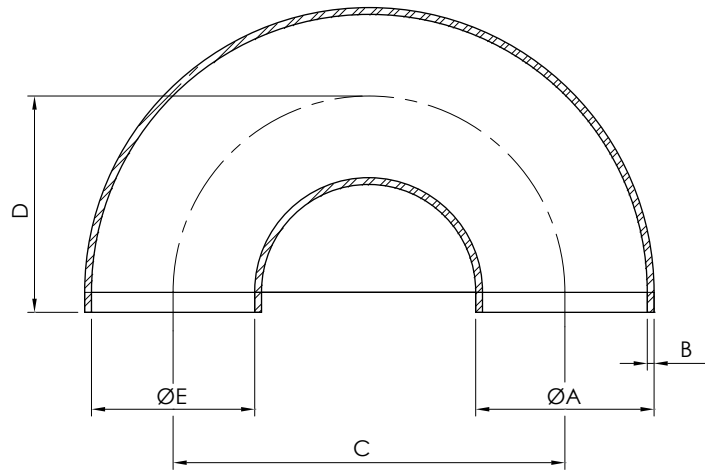
DIN 180° Bogen

Coude 180° à souder DIN

Codo soldar DIN 180°

 art. **388A**

DN	A	B	C	D	E
25	28	1.5	100	50	25
32	34	1.5	110	55	31
40	40	1.5	120	60	37
50	52	1.5	140	70	49
65	70	2	160	80	66
80	85	2	180	90	81
100	104	2	200	100	100



Ver. 04.18

Deviatore a saldare DIN

Tee bend

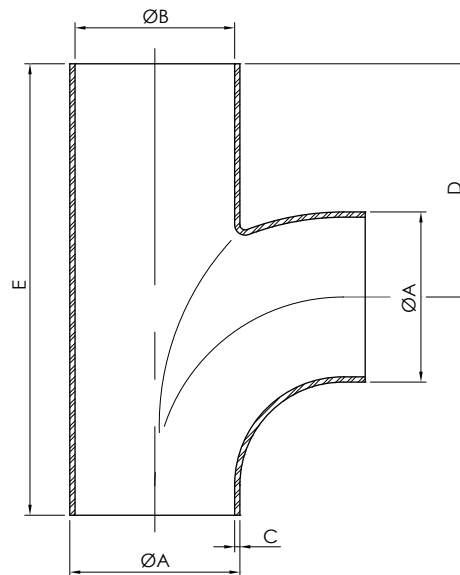
T-bogen

T+ coude a souder DIN

T+codo soldar DIN

 art. **388B**

DN	A	B	C	D	E
25	28	25	1.5	50	100
32	34	32	1.5	55	110
40	40	37	1.5	60	120
50	52	49	1.5	70	140
65	70	66	2	80	160
80	85	81	2	90	180
100	104	100	2	100	200



Ver. 04.18

Doppia curva a saldare DIN

Double tee bend

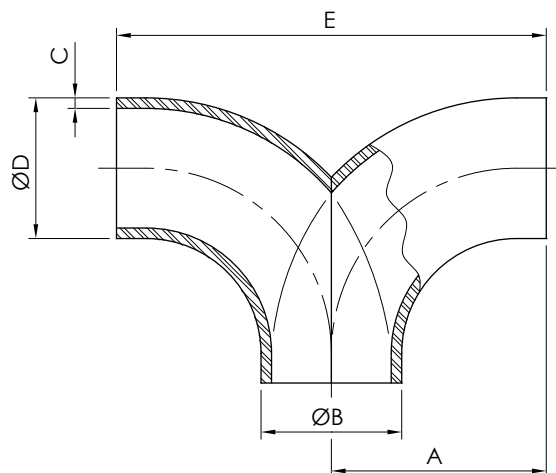
T-Doppelbogen

T-double coude a souder DIN

T-doble codo soldar DIN

 art. **388C**

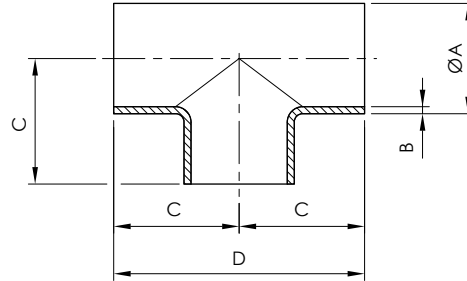
DN	A	ØB	C	ØD	E
25	50	25	1.5	28	100
32	55	31	1.5	34	110
40	60	37	1.5	40	120
50	70	49	1.5	52	140
65	80	66	2	70	160
80	90	81	2	85	180
100	100	100	2	104	200



TEE a saldare DIN

DIN welding tee
Schweiß - T.Stück DIN
Té à souder DIN
Té soldar DIN

DN	A	B	C	D
10	12	1	26	52
15	18	1.5	43	70
20	22	1.5	40	80
25	28	1.5	50	100
32	34	1.5	55	110
40	40	1.5	60	120
50	52	1.5	70	140
65	70	1.5	80	160
80	85	2	90	180
100	101.6	2	100	200
125	129	2	125	250
150	154	2	150	300

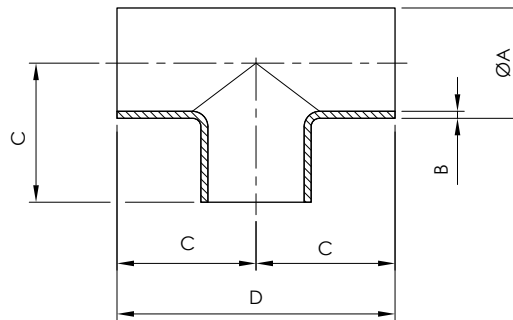


Ver. 04.18

TEE a mandrinare DIN

DIN expanding tee
Walz - T.Stück DIN
Té à dudgeonner DIN
Té mandrinar DIN

DN	A	B	C	D
10	12	1	26	52
15	18	1.5	35	70
20	22	1.5	40	80
25	28	1.5	50	100
32	34	1.5	55	110
40	40	1.5	60	120
50	52	1.5	70	140
65	70	2	80	160
80	85	2	90	180
100	101.6	2	100	200
125	129	2	125	250
150	154	2	150	300

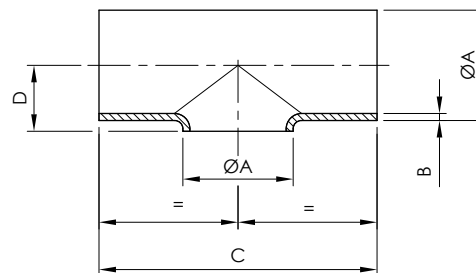


Ver. 04.18

TEE corto a saldare

Welding reducing tee, short
Schweiß -T.Stück, Kurz
Té à souder court DIN
Té soldar corto DIN

DN	A	B	C	D
10	12	1	26	9
15	18	1.5	35	12
20	22	1.5	40	14
25	28	1.5	50	17
32	34	1.5	55	20
40	40	1.5	60	23
50	52	1.5	70	29
65	70	2	80	38
80	85	2	90	45
100	101.6	2	100	54
125	129	2	125	68
150	154	2	150	80



Riduzione concentrica a saldare DIN

Concentric reducing socket DIN

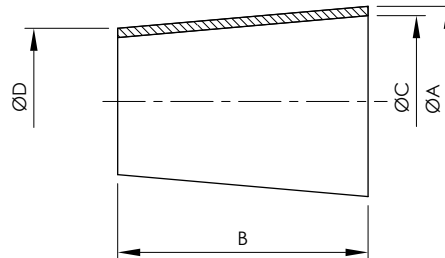
DIN Anschw. Reduzierstück

Réduction concentrique à souder DIN

Reduccion DIN concentrica

 art. **391**

DN	A	B	C	D
32/25	34	67	31	28
40/25	40	67	37	28
40/32	40	67	37	34
50/25	52	67	49	28
50/32	52	67	49	34
50/40	52	67	49	40
65/40	70	67	66	40
65/50	70	67	66	52
80/50	85	67	81	52
80/65	85	67	81	70
100/65	104	67	100	70
100/80	104	67	100	85
101/80	101.6	67	97.6	85



Ver. 04.18

Riduzione eccentrica a saldare DIN

Welding eccentric reducer DIN

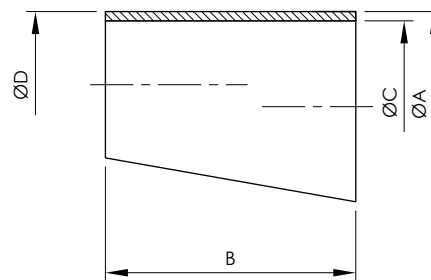
DIN Reduzierstück exz. SS

Réduction excentrique à souder DIN

Reduccion DIN excéntrica

 art. **392**

DN	A	B	C	D
32/25	34	67	31	28
40/25	40	67	37	28
40/32	40	67	37	34
50/25	52	67	49	28
50/32	52	67	49	34
50/40	52	67	49	40
65/40	70	67	66	40
65/50	70	67	66	52
80/50	85	67	81	52
80/65	85	67	81	70
100/65	104	67	100	70
100/80	104	67	100	85
101/80	101.6	67	97.6	85



Riduzione concentrica a mandrinare DIN

Expanding concentric reducer DIN

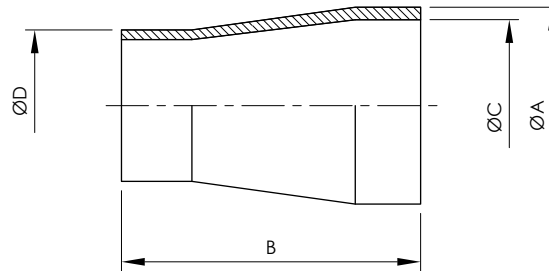
DIN Walz-Reduzierstück

Réduction concentrique à dudgeonner DIN

Reduccion mandrinar DIN concéntrica

 art. **392A**

DN	A	B	C	D
32/25	34	80	31	28
40/25	40	102	37	28
40/32	40	88	37	34
50/25	52	115	49	28
50/32	52	129	49	34
50/40	52	113	49	40
65/40	70	117	66	40
65/50	70	135	66	52
80/50	85	120	81	52
80/65	85	120	81	70
100/65	104	127	100	70
100/80	104	120	100	85
101/80	101.6	120	97.6	85



Ver. 04.18

Riduzione eccentrica a mandrinare DIN

Expanding eccentric reducer DIN

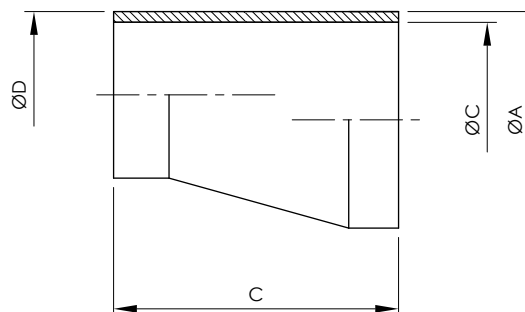
DIN Walz-Reduzierstück exz.

Réduction excentrique à dudgeonner DIN

Reduccion mandrinar DIN excéntrica

 art. **392B**

DN	A	B	C	D
32/25	34	102	31	28
40/25	40	110	37	28
40/32	40	102	37	34
50/25	52	130	49	28
50/32	52	120	49	34
50/40	52	110	49	40
65/40	70	153	66	40
65/50	70	130	66	52
80/50	85	153	81	52
80/65	85	120	81	70
100/65	104	153	100	70
100/80	104	118	100	85
101/80	101.6	118	97.6	85

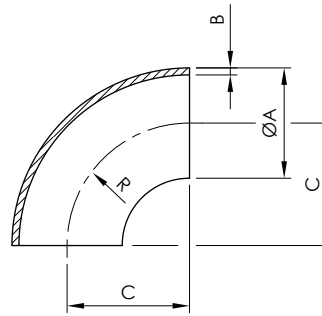


Curva 90° a saldare SMS

90° SMS welding bend
 SMS 90° Schweißbogen
 Coude 90° à souder SMS
 Codo a soldar SMS 90°

 art. **393**

DN	A	B	C	R
25	25.4	1.5	38	38
38	38.1	1.5	57	57
51	50.8	1.5	76	76
63	63.5	1.5	95	95
76	76.2	2	114	114
104	104	2	110	110



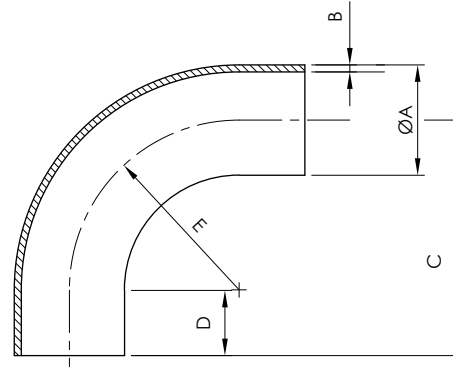
Ver. 04.18

Curva 90° a saldare raggio 3D SMS

90° SMS 3D welding bend
 SMS 90° Schweißbogen 3D
 Coude 90° grand rayon 3D SMS
 Codo a soldar 3D SMS 90°

 art. **394**

DN	A	B	C	D	E
25	25.4	1.5	68.1	30	38.1
38	38.1	1.5	87.2	30	57.2
51	50.8	1.5	106.2	30	76.2
63	63.5	1.5	124.5	30	94.5
76	76.2	2	144	30	114
104	104	2	130	30	100



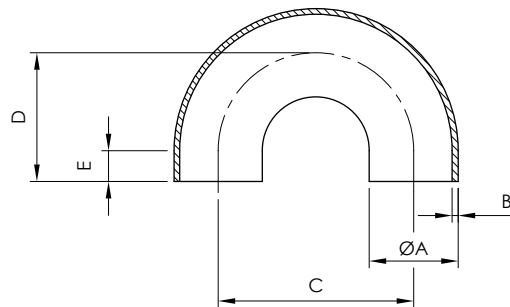
Ver. 04.18

Curva 180° a saldare SMS

180° SMS welding bend
 SMS 180° Schweißbogen
 Coude 180° à souder SMS
 Codo a soldar SMS 180°

 art. **395**

DN	A	B	C	D	E
25	25.4	1.5	81	75	22
38	38.1	1.5	104	90	35
51	50.8	1.5	143	100	47.5
63	63.5	1.5	168	115	60
76	76.2	2	171	130	72.2
104	104	2	220	150	100



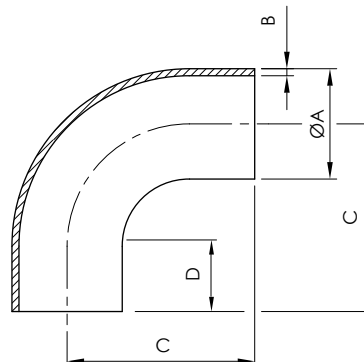
Ver. 04.18

Curva 90° a mandrinare SMS

90° SMS expanding bend
 SMS 90° Walzbogen
 Coude 90° à dudgeonner SMS
 Codo a mandrinar SMS 90°

 art. **396**

DN	A	B	C	D
25	25.4	1.5	55	30
38	38.1	1.5	70	32
51	50.8	1.5	82	31
63	63.5	1.5	105	41
76	76.2	2	110	34
101	104	2	140	40



Curva 45° a mandrinare SMS

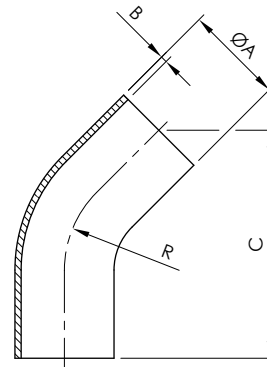
45° SMS expanding bend

SMS 45° Walzbogen

Coude 45° à dudgeonner SMS

Codo a mandrinar SMS 45°

DN	A	B	C	R
25	25.4	1.5	80	38
38	38.1	1.5	105	57
51	50.8	1.5	103	76
63	63.5	1.5	115	95
76	76.2	2	135	114
104	104	2	151	110



art. 397

Ver. 04.18

Tee a saldare SMS

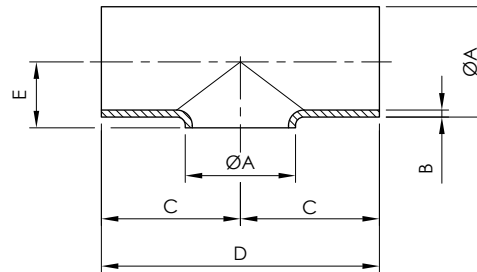
SMS Welding tee

SMS Schweiß – T.Stück

Té à souder SMS

Té soldar SMS

DN	A	B	C	D	E
25	25.4	1.5	55	110	15.5
38	38.1	1.5	70	140	22
51	50.8	1.5	82	164	28
63	63.5	1.5	105	210	35
76	76.2	2	110	220	41
101	101.6	2	150	300	54
104	104	2	150	300	55



art. 398

Ver. 04.18

Tee a mandrinare SMS

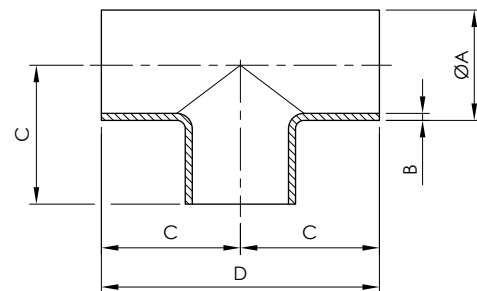
SMS Expanding tee

SMS Walz- T.Stück

Té à dudgeonner SMS

Té mandrinar SMS

DN	A	B	C	D
25	25.4	1.5	55	110
38	38.1	1.5	70	140
51	50.8	1.5	82	164
63	63.5	1.5	105	210
76	76.2	2	110	220
104	104	2	150	300



art. 399

Ver. 04.18

Croce a mandrinare SMS

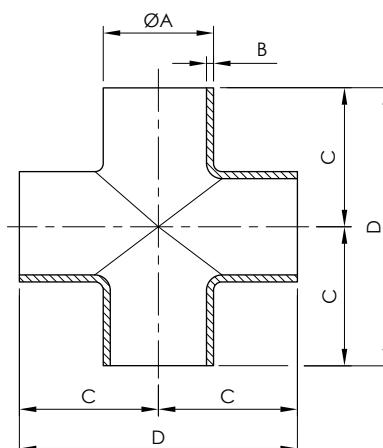
Cross piece to be expanded SMS

SMS Walz-Kreuzstück

Croix à dudgeonner SMS

Cruz mandrinar SMS

DN	A	B	C	D
25	25.4	1.2	55	110
38	38.1	1.2	70	140
51	50.8	1.2	82	164
63	63.5	1.5	105	210
76	76.2	1.6	110	220
101	104	2	150	300



art. 400

DN	A	B	C	D
38/25	38.1	67	35	25.4
51/25	50.8	67	47.5	25.4
51/38	50.8	67	47.5	38.1
63/38	63.5	67	60	38.1
63/51	63.5	67	60	50.8
76/38	76.2	67	72.2	38.1
76/51	76.2	67	72.2	50.8
76/63	76.2	67	72.2	63.5
101/63	101.6	67	97.6	63.5
101/76	101.6	67	97.6	76.2
104/76	104	67	100	76.2

Riduzione concentrica a saldare SMS

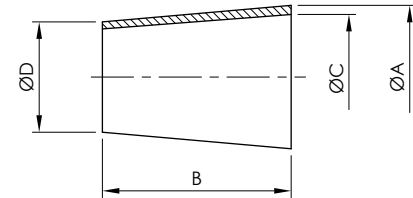
art. 401

Welding concentric reducing socket SMS

SMS Reduzierstück SS

Réduction concentrique à souder SMS

Reduccion concentrica SMS



Ver. 04.18

DN	A	B	C	D
38/25	38.1	67	35	25.4
51/25	50.8	67	47.5	25.4
51/38	50.8	67	47.5	38.1
63/38	63.5	67	60	38.1
63/51	63.5	67	60	50.8
76/38	76.2	67	72.2	38.1
76/51	76.2	67	72.2	50.8
76/63	76.2	67	72.2	63.5
101/63	101.6	67	97.6	63.5
101/76	101.6	67	97.6	76.2
104/76	104	67	100	76.2

Riduzione eccentrica a saldare SMS

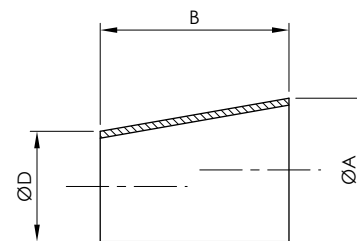
art. 402

Welding eccentric reducer SMS

SMS Reduzierstück exz

Réduction excentrique à souder

Reduccion SMS soldar excéntrica



Ver. 04.18

DN	A	B	C	D
38/25	38.1	97	35	25.4
51/25	50.8	115	47.5	25.4
51/38	50.8	97	47.5	38.1
63/38	63.5	115	60	38.1
63/51	63.5	97	60	50.8
76/38	76.2	132	72.2	38.1
76/51	76.2	115	72.2	50.8
76/63	76.2	97	72.2	63.5
101/63	101.6	120	97.6	63.5
101/76	101.6	120	97.6	76.2
104/76	104	120	100	76.2

Riduzione a mandrinare SMS concentrica

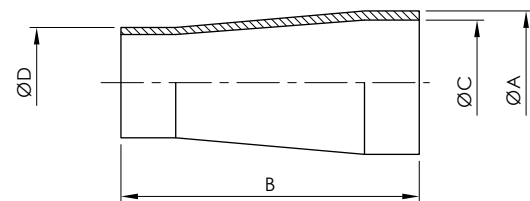
art. 403

Expanding concentric reducer SMS

SMS Walz-Reduzierstück

Réduction concentrique à dudgeonner SMS

Reduccion mandrinar SMS concéntrica



Ver. 04.18

DN	A	B	C	D
38/25	38.1	104	35	25.4
51/25	50.8	126	47.5	25.4
51/38	50.8	105	47.5	38.1
63/38	63.5	130	60	38.1
63/51	63.5	103	60	50.8
76/38	76.2	148	72.2	38.1
76/51	76.2	126	72.2	50.8
76/63	76.2	105	72.2	63.5
101/63	101.6	143	97.6	63.5
101/76	101.6	128	97.6	76.2
104/76	104	128	100	76.2

Riduzione a mandrinare SMS eccentrica

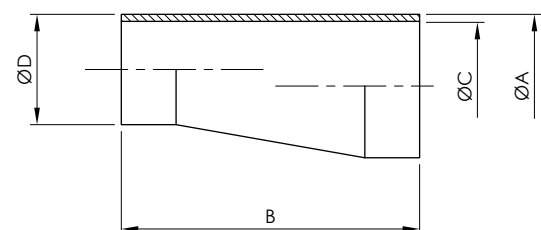
art. 404

Expanding eccentric reducer SMS

SMS Walz-Reduzierstück exz.

Réduction excentrique à dudgeonner SMS

Reduccion mandrinar SMS excéntrica



Curve a 90° R = 1,5 D a saldare secondo norme ASTM 403

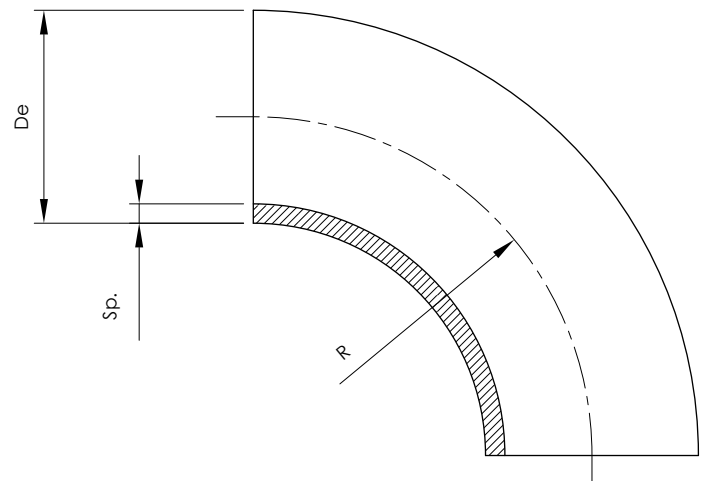
90° bends to be welded according to ASTM 403

Anzuschweissende 90° Bogen ASTM 403

Coudes 90° à souder ASTM 403

Codos 90° a soldar R = 1,5 D ASTM 403

DN ISO	GAS ASA	De	R	Sp.
8	1/4"	13.7	20	2
		14	20	1.5-2
10	3/8"	17.2	28.5	1.5-2
		18	27	1.5-2
		20	30	1.5-2
15	1/2"	21.3	31.8	1.5-2-2.5
		23	35	1.5
		25	38	1.5-2
20	3/4"	26.9	28.5	1.5-2-2.5
		30	45	1.5-2
		32	48	1.5-2
		33	49.5	1.5
25	1"	33.7	38	1.5-2-2.5-3
		35	52.5	1.5-2
32	1¼"	42.4	47.6	1.5-2-2.5-3
		43	64.5	1.5
		44.5	51	1.5-2
40	1½"	48.3	57.1	1.5-2-2.5-3
		50	75	1.5-2
		53	75	1.5
		54	75	2
		57	77	2-3
50	2"	60.3	76.1	1.5-2-2.5-3
		73	95	1.5-2-3
75	3"	76.1	96	1.5-2-2.5-3
		80	/	1.5-2-3
		84	126	2
80	3"	88.9	114.3	1.5-2-2.5-3
		104	150	2
90	3½"	101.6	133.5	2-3
		108	142	/
100	4"	114.3	152.5	2-2.5-3
		129	188	2
125	5"	139.7	191	2-2.5-3
		154	225	2
150	6"	168.3	229	2-2.5-3
		204	300	2
200	8"	219.2	305	2-2.5-3



TEE a saldare

Welding Tes

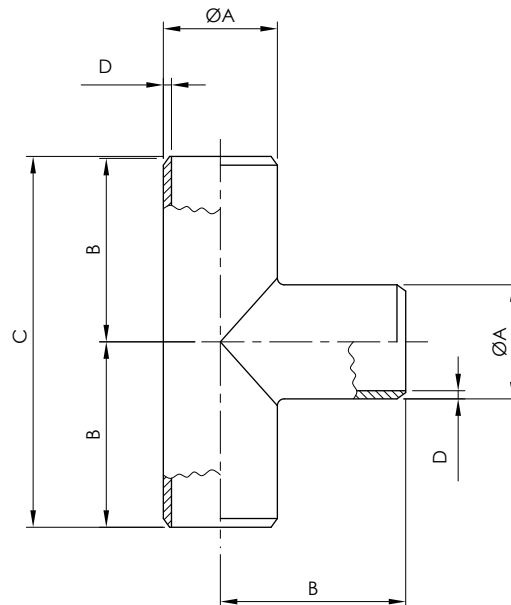
ISO Anschweiss T.Stück

Té à souder

Té soldar

 art. **406**

DN	GAS	A	B	C	D
15	1/2"	21.3	25.4	50.8	2-3-4-5
20	3/4"	26.9	28.5	57	2-3-4-5
25	1"	33.7	38.1	76.2	2-3-4-5
32	1¼"	42.4	47.6	95.2	2-3-4-5
40	1½"	48.3	57.1	114.2	2-3-4-5
50	2"	60.3	63.5	127	2-3-4-5
65	2½"	76.1	76.2	152.4	3-4-5-6
80	3"	88.9	85.7	171.4	3-4-5-6
90	3½"	101.6	95.2	190.4	3-4-5-6
100	4"	114.3	104.7	209.4	3-4-5-6-7
125	5"	139.7	123.8	247.6	3-4-5-6-7
150	6"	168.3	142.8	285.6	3-4-5-6-7
200	8"	219.1	177.8	355.6	3-4-5-6-7
250	10"	273	215.9	431.8	3-4-5-6-7
300	12"	323.9	254	508	3-4-5-6-7
350	14"	355.6	279.4	558.8	3-4-5-6-7



Ver. 04.18

Fondello bombato

Convex botton, tube as per ISO

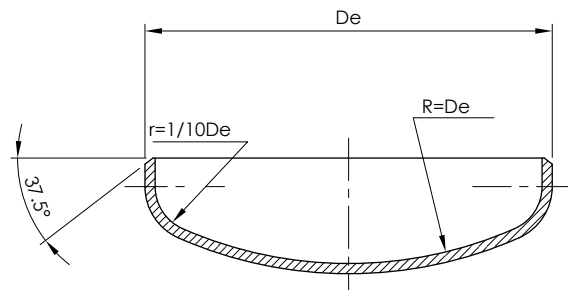
Gewölbter Boden/ISO - Rohr

Fonds bombés

Fondo Abombado

 art. **407**

DN-ISO	Gas-ASA	De	Sp
15	1/2"	21.3	1.5-2-2.5
20	3/4"	26.9	1.5-2-2.5-3
25	1"	33.7	1.5-2-2.5-3
32	1¼"	42.4	1.5-2-2.5-3
40	1½"	48.3	1.5-2-2.5-3
50	2"	60.3	2-2.5-3-3.5
65	2½"	76.1	2-2.5-3-3.5
80	3"	88.9	2-2.5-3-3.5
90	3½"	101.6	2-2.5-3-3.5
100	4"	114.3	2-2.5-3-3.5
125	5"	139.7	2-2.5-3-3.5-4
150	6"	168.3	2-2.5-3-3.5-4
200	8"	219.1	2.5-3-3.5-4-5



DN-GAS	Gas-ISO	ØD	Ød	L	Sp.
25x10	1"x3/8"	33.7	17.2	51	2-3
25x10	1"x1/2"	33.7	21.3	51	2-3
25x20	1"x3/4"	33.7	26.9	51	2-3
32x15	1¼"x1/2"	42.4	21.3	51	2-3
32x20	1¼"x3/4"	42.4	26.9	51	2-3
32x25	1¼"x1"	42.4	33.7	51	2-3
40x15	1½"x1/2"	48.3	21.3	64	2-3
40x20	1½"x3/4"	48.3	26.9	64	2-3
40x25	1½"x1"	48.3	33.7	64	2-3
40x32	1½"x1¼"	48.3	42.4	64	2-3
50x20	2"x3/4"	60.3	26.9	76	2-3
50x25	2"x1"	60.3	33.7	76	2-3
50x32	2"x1¼"	60.3	42.4	76	2-3
50x40	2"x1½"	60.3	48.3	76	2-3
65x25	2½"x1"	76.1	33.7	89	3-4
65x32	2½"x1¼"	76.1	42.4	89	3-4
65x40	2½"x1½"	76.1	48.3	89	3-4
65x50	2½"x2"	76.1	60.3	89	3-4
80x25	3"x1"	88.9	33.7	89	3-4
80x32	3"x1¼"	88.9	42.4	89	3-4
80x40	3"x1½"	88.9	48.3	89	3-4
80x50	3"x2"	88.9	60.3	89	3-4
80x65	3"x2½"	88.9	76.1	89	3-4
100x40	4"x1½"	114.3	48.3	102	3-4
100x50	4"x2"	114.3	60.3	102	3-4
100x65	4"x2½"	114.3	76.1	102	3-4
100x80	4"x3"	114.3	88.9	102	3-4
125x50	5"x2"	139.7	60.3	127	3-4
125x65	5"x2½"	139.7	76.1	127	3-4
125x80	5"x3"	139.7	88.9	127	3-4
125x100	5"x4"	139.7	114.3	127	3-4
150x50	6"x2"	168.3	60.3	140	3-4
150x65	6"x2½"	168.3	76.1	140	3-4
150x80	6"x3"	168.3	88.9	140	3-4
150x100	6"x4"	168.3	114.3	140	3-4
150x125	6"x5"	168.3	139.7	140	3-4
200x80	8"x3"	219.1	88.9	152	3-4
200x100	8"x4"	219.1	114.3	152	3-4
200x125	8"x5"	219.1	139.7	152	3-4
200x150	8"x6"	219.1	168.3	152	3-4

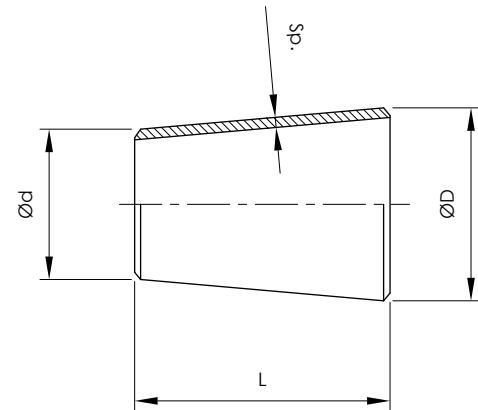
Riduzioni concentriche
art. 408

Concentric reducer

Reduzierstück

Réduction concentrique

Reduccion a soldar



Ver. 04.18

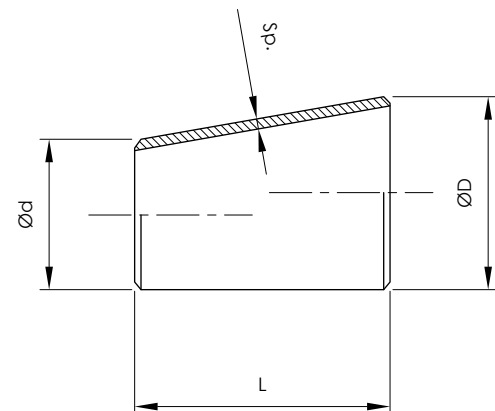
Riduzioni eccentriche
art. 409

Eccentric reducer

Exz. Reduzierungstück

Réduction excentrique

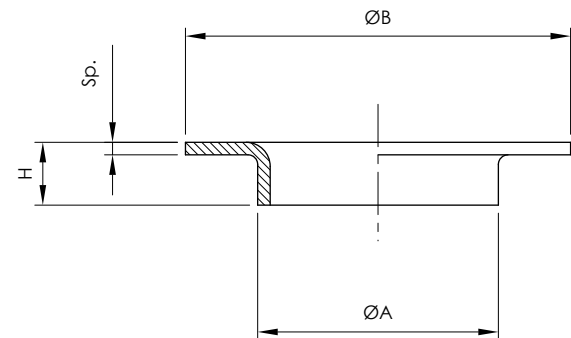
Reduccion a soldar



DN-GAS	Gas-ISO	ØA	ØB	H	Sp.
-	-	20	45-40	6	1.5-2-2.5
15	1/2"	21.3	45	6	1.5-2-2.5
-	-	25	58-50	6	1.5-2-2.5
20	3/4"	26.9	58	6	1.5-2-2.5
-	-	30	68-60	8	1.5-2-2.5
25	1"	33.7	68	8	1.5-2-2.5
-	-	38	78-70	10	1.5-2-2.5
32	1"	42.4	78	10	1.5-2-2.5
-	-	44.5	88-80	10	1.5-2-2.5-3
40	1½"	48.3	88	10	1.5-2-2.5-3
-	-	57	102-90	12	2-2.5-3-3.5
50	2"	60.3	102	12	2-2.5-3-3.5
-	-	73	105	12	2-2.5-3-4
65	2½"	76.1	122	12	2-2.5-3-4
80	3"	88.9	138	12	2-2.5-3-4
90	3½"	101.6	139.7	12	2-2.5-3-4
-	-	108	158-149	12	2-2.5-3-4
100	4"	114.3	158	12	2-2.5-3-4
-	-	133	188-178	14	2-2.5-3-4
125	-	139.7	188	14	2-2.5-3-4
-	5"	141.3	185.7	14	2-2.5-3-4
-	-	159	212-202	16	2-2.5-3-4
150	6"	168.3	212	16	2-2.5-3-4
175	-	193.7	232-242	18	2-2.5-3-4
200	8"	219.1	268	18	2.5-3-4
-	-	267	320-312	20	2.5-3-4
250	10"	273	320	20	2.5-3-4
300	12"	323.8	370	20	3-4-5
350	14"	355.6	430	25	3-4-5
-	-	368	430	25	3-4-5
400	16"	406.4	482	25	3-4-5
-	-	419	482-490	25	3-4-5
450	18"	457.2	520	25	3-4-5
-	-	470	532	25	3-4-5
500	20"	508	570	25	3-4-5
-	-	521	585	25	3-4-5
550	22"	558.8	635	25	3-4-5
-	-	572	635	25	3-4-5
600	24"	609.6	692	25	3-4-5
-	-	622	685	25	3-4-5

Bordi d'appoggio cartelle art. 410

Collars
 Unterstützungskragen
 Collette enbouti
 Arandela



Flangia UNI 2276 - PN6 regolare

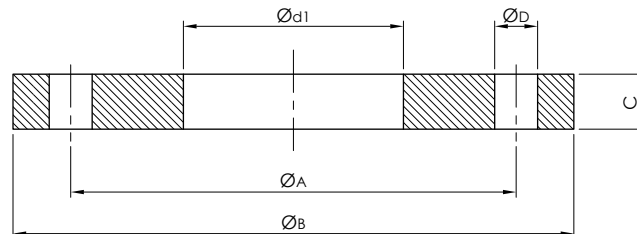
Flange UNI 2276 - PN6

Flansch UNI 2276 - PN6

Bride ronde UNI 2276 - PN6

Brida UNI 2276 - PN6 regular

DN	Ø TUBO-TUBE		d1		ØA	ØB	C	ØD	VITI SCREWS	Nr.FORI HOLES
	DIN	ISO	DIN	ISO						
10	13.5	17.2	14	17.5	50	75	10	11	M10	4
15	20	21.3	20.5	22	55	80	10	11	M10	4
20	25	26.9	25.5	27.5	65	90	12	11	M10	4
25	20	33.7	30.5	34	75	100	12	11	M10	4
32	38	42.4	38.5	43	90	120	14	14	M12	4
40	44.5	48.3	45	49	100	130	14	14	M12	4
50	57	60.3	58	61.5	110	140	14	14	M12	4
65	76.1		77		130	160	14	14	M12	4
80	88.9		90		150	190	16	18	M16	4
100	108	114.3	109	115.5	170	210	16	18	M16	4
125	133	139.7	134.5	141	200	240	18	18	M16	8
150	159	168.3	160.5	170	225	285	20	18	M16	8



Ver. 04.18

Flangia UNI 2277 - PN10 regolare

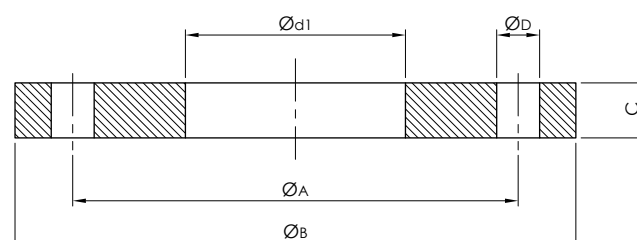
Flange UNI 2277 - PN10

Flansch UNI 2277 - PN10

Bride ronde UNI 2277 - PN10

Brida UNI 2277 - N10 regular

DN	Ø TUBO-TUBE		d1		ØA	ØB	C	ØD	VITI SCREWS	Nr.FORI HOLES
	DIN	ISO	DIN	ISO						
10	13.5	17.2	14	17.5	60	90	12	14	M12	4
15	20	21.3	20.5	22	65	95	12	14	M12	4
20	25	26.9	25.5	27.5	75	105	14	14	M12	4
25	30	33.7	30.5	34	85	115	14	14	M12	4
32	38	42.4	38.5	43	100	140	16	18	M16	4
40	44.5	48.3	45	49	110	150	16	18	M16	4
50	57	60.3	58	61.5	125	165	18	18	M16	4
65	76.1		77		145	185	18	18	M16	4
80	88.9		90		160	200	20	18	M16	4
100	108	114.3	109	115.5	180	220	22	18	M16	8
125	133	139.7	134.5	141	210	250	24	18	M16	8
150	159	168.3	160.5	170	240	285	24	22	M20	8



Flangia UNI 2276 - PN6 Ridotta

Flange UNI 2276 - PN6 reduced thickness

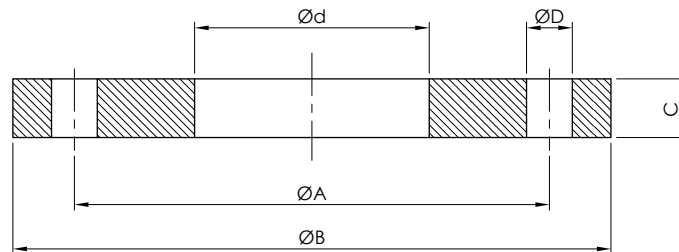
Flansch UNI 2276 - PN6 reduzierte Dicke

Bride ronde UNI 2276 - PN6 épaisseur réduit

Brida UNI 2276 - PN6 espesor reducido

 art. **421**

DN	Ø TUBO-TUBE		d1		ØA	ØB	C	ØD	VITI SCREWS	Nr.FORI HOLES
	DIN	ISO	DIN	ISO						
10	13.5	17.2	14	17.5	50	75	10	11	M10	4
15	20	21.3	20.5	22	55	80	10	11	M10	4
20	25	26.9	25.5	27.5	65	90	10	11	M10	4
25	20	33.7	30.5	34	75	100	10	11	M10	4
32	38	42.4	38.5	43	90	120	10	14	M12	4
40	44.5	48.3	45	49	100	130	10	14	M12	4
50	57	60.3	58	61.5	110	140	10	14	M12	4
65	76.1		77		130	160	10	14	M12	4
80	88.9		90		150	190	12	18	M16	4
100	108	114.3	109	115.5	170	210	12	18	M16	4
125	133	139.7	134.5	141	200	240	12	18	M16	8
150	159	168.3	160.5	170	225	285	12	18	M16	8



Ver. 04.18

Flangia UNI 2277 - PN10 Ridotta

Flange UNI 2277 - PN10 reduced thickness

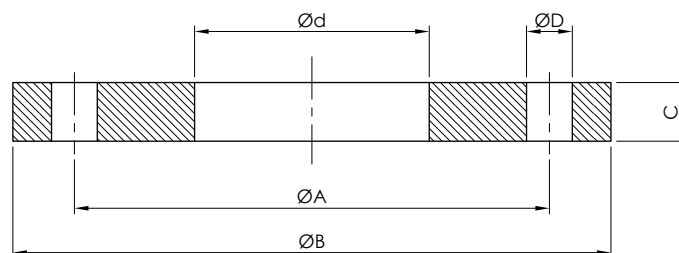
Flansch UNI 2277 - PN10 reduzierte Dicke

Bride ronde UNI 2277 - PN10 épaisseur réduit

Brida UNI 2277 - PN10 espesor reducido

 art. **422**

DN	Ø TUBO-TUBE		d1		ØA	ØB	C	ØD	VITI SCREWS	Nr.FORI HOLES
	DIN	ISO	DIN	ISO						
10	13.5	17.2	14	17.5	60	90	10	14	M12	4
15	20	21.3	20.5	22	65	95	10	14	M12	4
20	25	26.9	25.5	27.5	75	105	10	14	M12	4
25	20	33.7	30.5	34	85	115	10	14	M12	4
32	38	42.4	38.5	43	100	140	10	18	M16	4
40	44.5	48.3	45	49	110	150	10	18	M16	4
50	57	60.3	58	61.5	125	165	10	18	M16	4
65	76.1		77		145	185	10	18	M16	4
80	88.9		90		160	200	12	18	M16	4
100	108	114.3	109	115.5	180	220	12	18	M16	8
125	133	139.7	134.5	141	210	250	12	18	M16	8
150	159	168.3	160.5	170	240	285	12	22	M20	8



Le informazioni contenute in questo documento sono puramente indicative e non impegnative, l'azienda si riserva il diritto di modificarle senza obbligo di preavviso.
 The informations provided in this document are intended for informational purposes only and are subject to change without notice.