

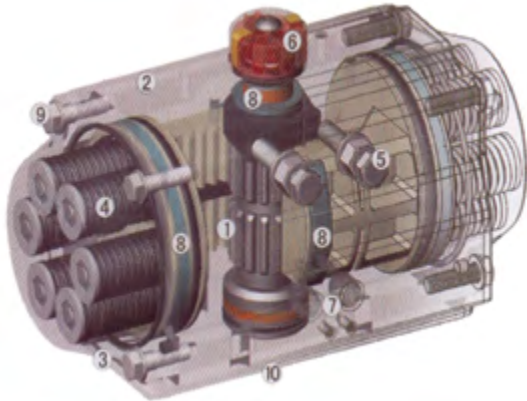


ATTUATORI
ACTUATORS
ANTRIEBE
VERINS
ACTUADORES

Attuatori Rotanti Pignone & Cremagliera Rack & Pinion Pneumatic Actuators

art. **139A-DE** (doppio effetto)
 (double Acting)

art. **139B-SE** (semplice effetto)
 (spring return)



CARATTERISTICHE GENERALI

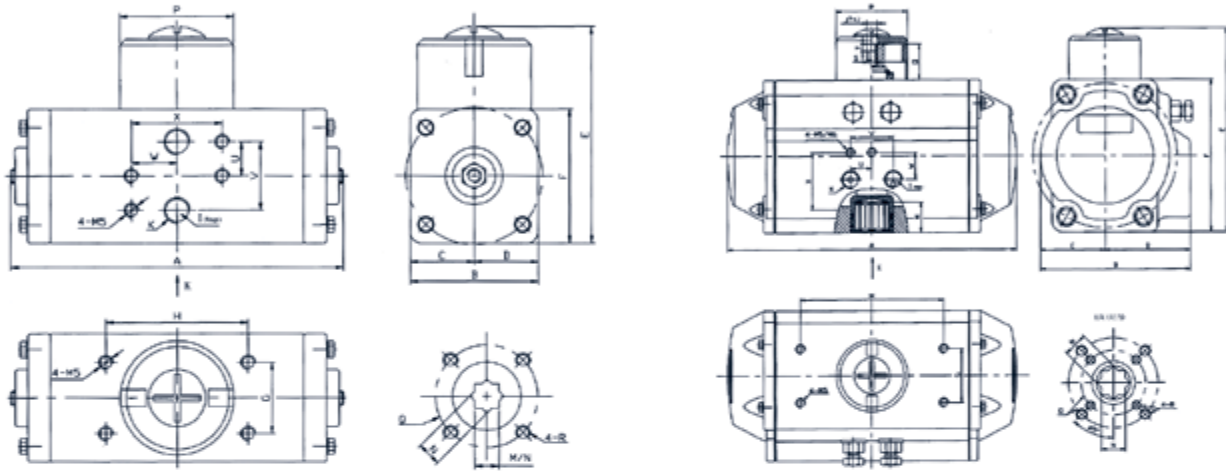
- Funzionamento a Doppio e Semplice effetto con cartucce molla precomprese vincolate senza l'uso di materiali metallici (molla verniciata con vernice epossidica).
- Pignone e viti in Acciaio Inox con protezione Antiespulsione.
- La foratura di fissaggio è realizzata a norme NAMUR VDI/VDE 3845
- Alimentazione con aria lubrificata, olio idraulico, acqua emulsionata, min. 1 Bar - max 8 Bar.
- Temperature standard di funzionamento: -20°C+80°C
- Collaudo finale e di tenuta al 100% con apparecchiatura elettronica.

GENERAL FEATURES

- Double Acting or Spring return with spring cartridges made with non metallic materials (springs are epoxy coated).
- Stainless steel pinion with anti-blowout protection in both directions.
- Coated by epoxy for corrosion resistance
- Upper drilling for accessoires and upper pinion machining according to NAMUR VDI/VDE 3845 standards.
- Supply: air lubricated if possible, hydraulic oil or water, min 1 Bar (40 psi) and max 8 Bar (120 psi).
- Standard Working temperature: -20°C + 80°C (-4°F+176°F)
- 100% seal and running test carried out on electronic equipment.

Double Acting Actuator Output Torque(Nm)

Model	Air supply pressure(Unit : Bar)									
	2.5bar	3bar	3.5bar	4bar	4.5 bar	5 bar	5.5 bar	6 bar	7 bar	8 bar
AT-32D	3.6	4.3	5	5.7	6.4	7.3	8	8.7	10	11.6
AT-50D	8.4	10.1	11.7	13.5	15.1	16.7	18.4	20	23.4	26.7
AT-63D	14.8	17.7	20.6	23.6	26.5	29.4	32.3	35.3	41.1	47
AT-75D	29.2	35	40.8	46.6	52.5	58.3	64.1	69.9	81.5	93.2
AT-88D	45.9	55	64.2	73.3	82.5	91.6	101.1	110.1	128.1	146.1
AT-100D	66.8	80.1	93.4	106.3	120.3	133.3	146.3	160.3	186.3	213.3
AT-115D	107	129	150	172	193	215	236	258	301	344
AT-125D	139	167	195	223	250	278	303	333	389	444
AT-145D	217	261	304	348	391	434	478	521	608	695
AT-160D	285	341	398	455	512	577	625	682	795	909

Dimensional Drawing


AT 032

 AT 050, AT 063, AT 075, AT 088, AT 100, AT 115,
AT 125, AT 145, AT 160, AT 190

Dimension

Unit (mm)

Model	FLANGE L (ISO 5211)		R																		
	Q	M/N (min)	A	B	C	D	E	F	G	H	I	J	K	O	P	S	T	U	V	W	X
AT-32	F03	M5	118	45	22.5	22.5	77	47	25	50	PF	M6	1/8"	20	40	4	4	12	24	16	32
	φ36	10/9																			
AT-50	F03/F05	M5/M6	144	70.5	29	41.5	99	69	30	80	PF	M6	1/8"	20	40	4	4	12	24	16	32
	φ36/φ50	13/11																			
AT-63	F03/F05	M5/M6	163	83.5	36	47.5	115	85	30	80	PF	M6	1/8"	20	40	4	4	12	24	16	32
	φ36/φ50	16/14																			
AT-75	F05/F07	M6/M8	214	94	43	51	132	102	30	80	PF	M6	1/8"	20	40	4	4	12	24	16	32
	φ50/φ70	19/17																			
AT-88	F05/F07	M6/M8	252	105	49.5	55.5	145	115	30	80	PF	M6	1/8"	20	40	4	4	12	24	16	32
	φ50/φ70	20/17																			
AT-100	F07/F10	M8/M10	270	120	56	64	157	127	30	80	PF	M6	1/4"	20	40	4	4	12	24	16	32
	φ70/φ102	24/22																			
AT-115	P07/f10	M8/M10	316	138	90	105	185	145	30	80	PF	M6	1/4"	30	62	4	4	12	24	16	32
	φ70/φ102	24/22																			
AT-125	F07/F10	M8/M10	354	147.5	69	78.5	197	157	30	80	PF	M6	1/4"	30	62	4	4	12	24	16	32
	φ70/φ102	29/27																			
AT-145	F10/F12	M10/M12	418	167	80	87	218	178	30	80/130	PF	M6	1/4"	30	62	4	4	12	24	16	32
	φ102/φ125	30/27																			
AT-160	F10/F12	M10/M12	450	193	89	104	240	200	30	80/130	PF	M6	1/4"	30	80	4	4	12	24	16	32
	φ102/φ125	30/27																			

Single Acting Actuator Output Torque(Nm)

Air pressure		2.5bar		3bar		3.5bar		4bar		4.5 bar		5 bar		5.5 bar		6 bar		7 bar		8 bar		Spring		Torque			
Model	Spring Q.ty	0°	90°	0°	90°	0°	90°	0°	90°	0°	90°	0°	90°	0°	90°	0°	90°	0°	90°	0°	90°	90°	0°	S	E		
AT-50S	S.set	S	E	S	E	S	E	S	E	S	E	S	E	S	E	S	E	S	E	S	E	S	E	S	E		
	5	5.0	3.5	6.7	5.2	8.4	6.9	10.0	8.5	11.7	10.2	13.3	11.8											5	3.5		
	6	4.4	2.6	6.0	4.2	7.7	5.9	9.4	7.5	11.0	9.2	12.7	10.9	14.3	12.5										5.9	4.1	
	7			5.4	3.2	7.0	4.9	8.7	6.6	10.3	8.2	12	9.9	13.7	11.6	15.3	13.2								6.9	4.8	
	8					6.3	3.9	8.0	5.6	9.7	7.3	11.3	8.9	13.0	10.6	14.7	12.2	18.0	15.6						7.9	5.5	
	9							7.3	4.6	9.0	6.3	10.7	7.9	12.3	9.6	14.0	11.3	17.3	14.6	20.6	17.9				8.9	6.2	
	10									8.3	5.3	10.0	7.0	11.6	8.6	13.3	10.3	16.6	13.6	19.9	16.9				9.8	6.8	
	11											9.3	6.0	11.0	7.7	12.6	9.3	16.0	12.6	19.3	16.0				10.8	7.5	
	12													10.3	6.7	12.0	8.3	15.3	11.7	18.6	15.0				11.8	8.1	
	AT-63S	5	9.2	6.3	12.1	9.3	15.1	12.2	18.0	15.1	20.9	18.0	23.9	21.0												8.5	5.6
		6	8.1	4.6	11.0	7.6	14.0	10.5	16.9	13.4	19.8	16.4	22.8	19.3	25.7	22.2	24.6	20.5								10.2	6.8
		7			9.9	5.9	12.9	8.8	15.8	11.7	18.7	14.7	21.3	17.6	24.6	20.5	27.5	23.5	26.4	21.8	32.3	27.6				11.9	7.9
8						11.7	7.1	14.7	10.1	17.6	13.0	20.5	15.9	23.5	18.2	26.4	21.8	32.3	27.6							13.6	9
9								13.6	8.4	16.5	11.3	19.4	14.2	22.4	17.2	25.3	20.1	31.2	26.0	38.0	31.8					15.3	10.1
10										15.4	9.6	18.3	12.5	21.2	15.5	24.2	18.4	30.0	24.3	35.9	30.1					17	11.2
11												17.2	10.9	20.1	13.8	23.1	16.7	28.9	22.6	34.8	28.4					18.7	12.3
12														19.0	12.1	22.0	15.0	27.8	20.9	33.7	26.8					20.3	13.4
AT-75S		5	18.1	11.9	23.9	17.7	29.8	23.5	35.6	29.3	41.4	35.1	47.2	41.0												17.4	11.2
		6	15.9	8.4	21.7	14.2	27.6	20.0	33.4	25.9	39.2	31.7	45.0	37.5	50.8	43.3	54.4	45.7								20.9	13.4
		7			19.5	10.8	25.3	16.6	31.2	22.4	37.0	28.2	42.8	34.0	48.6	39.9	52.2	42.2	63.8	53.8						24.3	15.6
		8					23.1	13.1	26.7	15.5	32.6	21.3	38.4	27.1	44.2	32.9	52.0	38.7	61.6	50.4	73.3	62.0				27.8	17.8
	9									30.3	17.8	36.2	23.7	42.0	29.5	48.7	36.3	59.4	46.9	71.1	58.6	73.3	62.0		31.3	20	
	10											33.9	20.2	39.8	26.0	45.6	31.8	57.2	43.5	68.8	55.4				34.7	22.2	
	11													37.6	22.5	43.4	28.4	55.0	40.0	66.6	51.6				38.2	24.4	
	12																								41.6	26.6	
	AT-88S	5	27.5	17.0	36.7	26.1	45.8	35.3	55.0	44.4	64.1	53.6	73.3	62.7												29	18.4
		6	23.9	11.2	33.0	20.1	42.2	29.5	51.3	38.7	60.5	47.8	69.6	57.0	78.8	66.1	84.32	69.5								24.8	22.1
		7			29.3	14.6	38.5	23.7	47.6	32.9	56.8	42.0	65.9	51.2	75.1	60.3	80.6	63.7	98.9	82.0						40.5	25.8
		8					34.8	18.0	44.0	27.1	53.1	36.3	62.3	45.4	71.4	54.6	80.6	63.7	98.9	82.0						46.3	29.4
9								40.3	21.3	49.5	30.5	58.6	39.6	67.8	48.8	78.9	57.9	95.2	76.2	113	94.6				52.1	33.1	
10										45.8	24.7	54.9	33.9	64.1	43.0	73.2	52.2	91.6	70.5	110	88.8				57.9	36.8	
11												51.3	28.1	60.4	37.2	69.6	46.4	87.9	64.7	106	83.0				63.6	40.4	
12														56.8	31.5	65.9	40.6	84.2	58.9	102	77.2				69.4	44.1	
AT-100S		5	41.2	27.2	54.5	40.5	67.8	53.8	81.1	67.1	94.4	80.4	108	93.7												39.5	25.4
		6	36.2	19.3	49.5	32.6	62.8	45.9	76.1	59.2	89.4	72.5	103	85.8	116	99.1	124	104								47.4	30.5
		7			44.4	24.7	57.7	38.0	71.0	51.3	84.3	64.6	97.6	77.9	111	91.2	111	91.2	146	123						55.2	35.6
		8					52.6	30.1	65.9	43.4	79.2	56.7	92.5	70.0	106	83.3	119	96.6	146	123						63.1	40.6
	9							60.9	35.6	74.1	48.9	87.4	62.2	101	75.4	114	88.7	141	115	167	142				71	45.7	
	10									69.1	41.0	82.4	54.3	95.7	67.6	109	80.9	135	107	162	134				78.9	50.8	
	11											77.3	46.4	90.6	59.7	104	73.0	130	99.1	157	126				86.8	55.8	
	12													85.5	51.8	98.8	65.1	125	92.1	152	118				94.6	60.9	
	AT-115S	5	66.5	41.9	87.9	63.4	109	84.9	131	106	152	128	174	149												65.5	41
		6	58.3	28.8	79.7	50.3	101	71.8	123	93.3	144	115	166	136	187	158	200	166								78.6	49.2
		7			71.5	37.2	93	58.7	115	80.2	136	102	158	123	179	145	192	153	235	196						91.7	57.4
		8					84.8	45.6	106	67.1	128	88.6	149	110	171	132	192	153	235	196						105	65.6
9								98.1	54	120	75.5	141	97	163	118	184	140	227	183	270	226				118	73.8	
10										111	62.4	133	83.9	154	105	176	127	219	170	262	213				131	82	
11												125	70.8	146	92.3	168	114	211	157	254	200				144	90.2	
12														138	79.2	159	101	202	143	246	187				157	98	
AT-125S		5	86.1	56.2	113.7	84.0	141	111	169	139	197	167	224	195												82.1	52.6
		6	75.6	39.7	103.2	67.4	131	95.1	159	123	186	150	214	178	242	206	259	217								99.1	63.1
		7			92.8	50.9	120.5	78.6	148	106	176	134	203	162	232	189	248	201	304	256						115	73.6
		8					110	62.1	137.6	89.8	165	117	193	145	221	173	248	201	304	256						132	84.1
	9							144	84.6	155	101	182	129	210	156	238	184	293	239	349	295				148	94.6	
	10									172	112	172	112	200	140	227	168	283	223	338	278				165	105	
	11											161	95.8	189	123	217	151	272	206	328	262				181	116	
	12													179	107	206	135	262	109	318	245				198	126	

Box micro IP65 con 2 finecorsa meccanici o induttivi per serie AT

art. 139C

Box micro with 2 mechanical microswitches or with 2 proximity sensors for AT models

Top IP65 mit 2 Endschaltern oder Näherungsinitionen für AT Typ

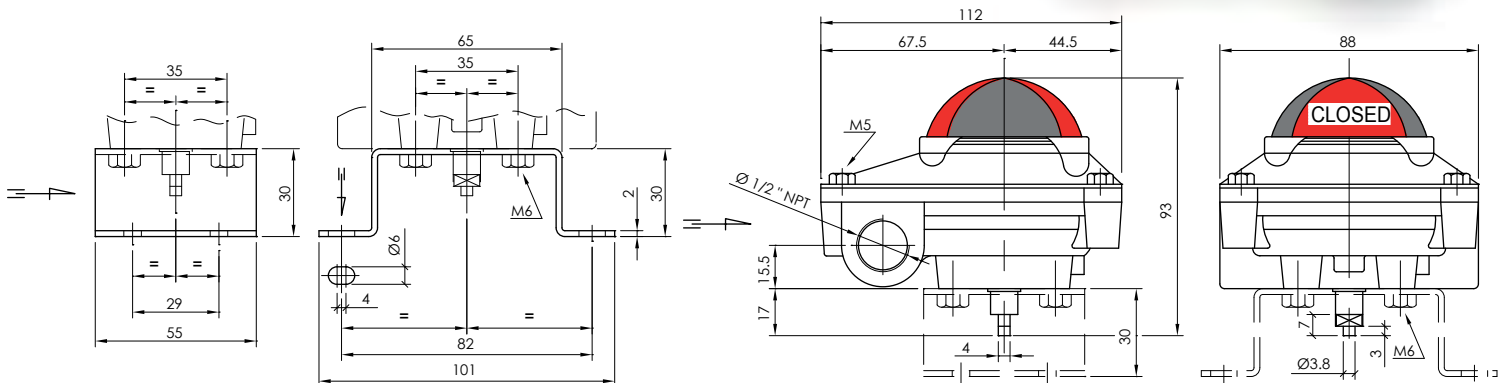
Boîtier IP65 avec 2 micro contacts ou détecteurs de proximité pour série AT

Capsula IP 65 con 2 micros o detectores por serie AT



DATI TECNICI - TECHNICAL DATA	
PROTEZIONE / PROTECTION	IP 67
INTERRUTTORE / STD. SWITCH	SSSGL (OMRON)
CERTIFICATI / CERTIFICATE	CE, UL, CSA, SEMKO, SEV EN 61058-1
TEMPERATURA DI LAVORO ENVIRONMENT	-20 / +80°C
CONNESSIONE CONNECTOR	2 x NPT 1/2"
TERMINALE / TERMINAL	8 POINTS (0.08 - 2.5 mm)
INDICATORE DI POSIZIONE POSITION INDICATOR	CLOSED : RED OPEN : YELLOW
INTERRUTTORE / SWITCH	MECHANICAL SWITCH x 2 PROXIMITY SENSOR x 2
RIVESTIMENTO ESTERNO EXTERNAL COATING	POLYESTER COATING (BLACK)
ALBERO / SHAFT	17 mm

MATERIALI - MATERIAL	
CORPO / BODY	ALUMINIUM DIE CASTING
INDICATORE / INDICATOR	POLYESTER COATING
CAMMA / CAM	POLYESTER COATING
MOLLA / SPRING	STAINLESS STEEL
VITI / SCREW	STAINLESS STEEL
GUARNIZIONI / O-RING	NBR
RONDELLE / WASHER	BRONZE
ANELLO / E-RING	STAINLESS STEEL
MESSA A TERRA GROUND WIRE	STAINLESS STEEL
STAFFA DI SUPPORTO BRACKET	STAINLESS STEEL



Ver. 04.18

Valvola solenoide monostabile. Montaggio dir. su attuatori serie AT

art. 139D

Solenoid valve designed for direct mounting onto AT actuators

Magnetventil für ein direct Montage auf "AT" Antriebe

Electro-vanne pour assemblage direct sur verin série AT

Electroválvula por montaje directo sobre actuador serie AT

VOLTAGGIO / VOLTAGE

24v DC

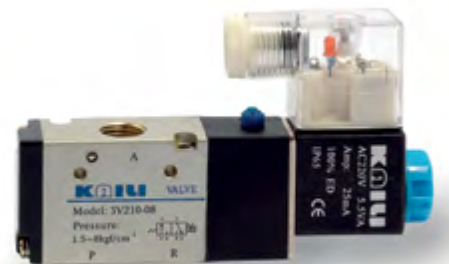
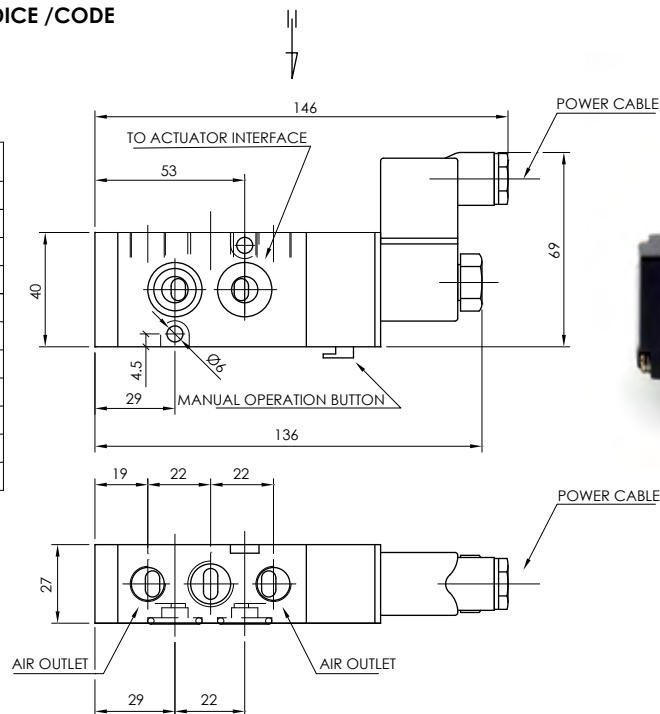
110v AC (50/60 Hz)

240V AC (50/60 Hz)

CODICE / CODE

B
T
U

DATI TECNICI - TECHNICAL DATA	
INTERFACE	AIR INLET G 1/4" - AIR OUTLET G 1/4"
EFFECTIVE CROSS-SECTIONAL AREA (MM ²)	35
LUBRIFICATION	NOT REQUIRED
WORKING PRESSURE	1.5 - 8 bar
OPERATING TEMPERATURE	0 + 50 °C
VOLTAGE RANGE	AC 220V : 3.9 VA, 6.0 VA, 8.5 VA DC 24V : 2.5 W, 4.8 W
POWER CONSUMPTION	15%
EXCHANGE TIME (S)	0.05
MANUALLY	PRESS THE REVERSING
BASIC	IP 65
EXPLOSION - PROOF	Exm T4



Servomotore elettrico tipo SM.100 - C €

BI-Directional Electric Actuator SM.100 - C €

Electromotorischer Drehantrieb SM.100 - C €

Verin électrique type SM.100 - C €

Actuador Electrico Tipo SM.100 - C €

art. 139E

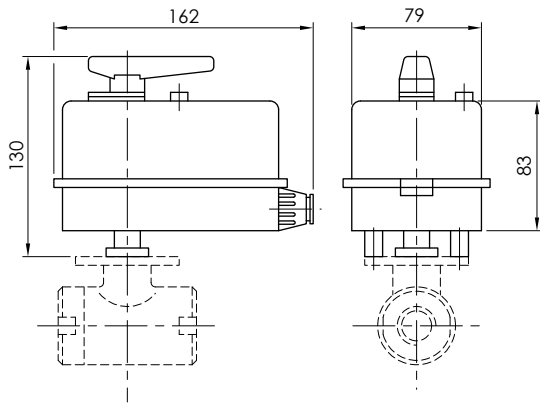


TABELLA DI ACCOPPIAMENTO VALVOLE A SFERA CON SERVOMOTORI SM.100
BALL VALVES CONNECTION TABLE WITH REVERSIBLES ACTUATORS SM.100

TIPO ITEM	COPPIA TORQUE	VOLTAGGIO VOLTAGE	VELOCITA' SPEED	PESO WEIGHT
SM100.012	12 Nm	24/230V 50 Hz	30 sec.	Kg 1
SM100.020	20 Nm	24/110/230V 50Hz	60 sec.	Kg 1
SM100.035	35Nm	24/110/230V 50Hz	180 sec.	Kg 1

CARATTERISTICHE TECNICHE

- Servomotore ad azione reversibile, micromotore funzionante a 24-110-230v 50 hZ.
- Potenza assorbita : 4.5 VA.
- Servizio continuo : 100%.
- Angolo di rotazione : 90/180°.
- Temperatura di esercizio : -10 / +65°C.
- Protezione : IP 42 (a richiesta IP 65).

EQUIPAGGIAMENTO STANDARD

- Comando manuale a leva.
- Indicatore visivo di posizionamento.

OPZIONALI

- Tensione : diversa da 230V.
- Protezione : IP 65.
- Blocco di sicurezza : il servomotore, in mancanza di corrente, chiude automaticamente.
- Resistenza elettrica : 7 W.
- Rele'.
- Potenziometro.
- Uno o due contatti ausiliari di fine corsa CA.
- Accoppiamento con valvole non di nostra produzione.
- Resistenza elettrica.
- Scheda elettromeccanica di regolazione
- 4-20mA 0-10V (alimentazione 24V 50 Hz).
- Adattatore ISO.
- Leva di sblocco IP 65.

NOTA

Servomotori con voltaggi speciali possono essere quotati su richiesta.

TECHNICAL DATA

- Reversible actuator micromotor operating at 24-110-230v 50 hZ.
- Power absorption : 4.5 VA.
- Continuous operation : 100%.
- Rotation angle : 90/180°.
- Operating temperature : -10 / +65°C.
- Enclosure : IP 42 (IP 65 on request).

STANDARD EQUIPMENT

- Manual lever command.
- Visible positioning indicator.

OPTIONAL

- Tension : different of 230V.
- Enclosure : IP 65.
- Security block : the actuator schuts automatically in obscence of electric current.
- Electric resistance : 7 W.
- Electric regulation cards
- 4-20mA 0-10V (alimentation 24V 50 Hz).
- ISO Adaptor.
- IP 65 lever.

NOTE

Actuators with special voltage ratings are also available for quotation on request.

Servomotore elettrico tipo SM.200 - ☺☺

BI-Directional Electric Actuator SM.200 - ☺☺

Electromotorischer Drehantrieb SM.200 - ☺☺

Verin électrique type SM.200 - ☺☺

Actuador Electrico Tipo SM.200 - ☺☺

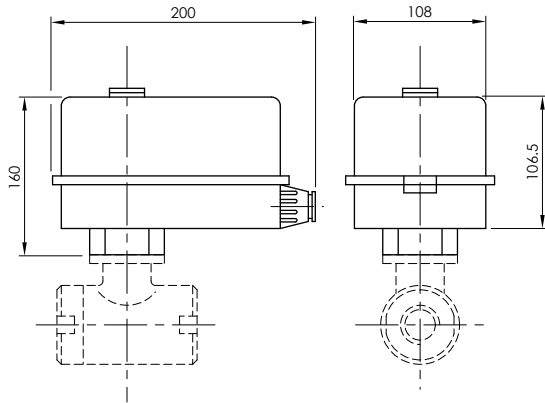


TABELLA DI ACCOPIAMENTO VALVOLE A SFERA CON SERVOMOTORI SM.200
BALL VALVES CONNECTION TABLE WITH REVERSIBLES ACTUATORS SM.200

2"	2½"	3"	4"	5"
----	-----	----	----	----

TIPO ITEM	COPPIA TORQUE	VOLTAGGIO VOLTAGE	VELOCITA' SPEED	PROTEZIONE ENCLOSURE	PESO WEIGHT
SM200.020	25 Nm	24 DC O AC	5 sec.	IP 42/65	Kg 2
SM200.030	35 Nm	24/230V 50Hz	30 sec.	IP 42/65	Kg 2
SM200.060	60 Nm	24/230V 50 Hz	60 sec.	IP 42/65	Kg 2
SM200.120	120 Nm	24/230V 50 Hz	180 sec.	IP 42/65	Kg 2

CARATTERISTICHE TECNICHE

- Servomotore ad azione reversibile, micromotore funzionante a 24-230v 50 Hz.
- Potenza assorbita : 10.5 VA.
- Servizio continuo : 100%.
- Angolo di rotazione : 90/180°.
- Temperatura di esercizio : -10 / +65°C.
- Protezione : IP 65.

EQUIPAGGIAMENTO STANDARD

- Comando manuale interno.
- Mensola di accoppiamento a norme ISO 5211, DIN 3337.
- Contatti ausiliari : 2.

OPZIONALI

- Leva di posizionamento manuale con staffa inox.
- Tensione : diversa da 230V.
- Resistenza elettrica.
- Rele'.
- Potenzimetro (0-1000 Ohm).
- Scheda elettromeccanica di regolazione
- 4-20mA 0-10V con attuatore a 24V.
- Spia visiva di posizionamento.
- Blocco di sicurezza.
- Accoppiamento con valvole non di nostra produzione.

NOTA

Servomotori con voltaggi speciali possono essere quotati su richiesta.

TECHNICAL DATA

- Reversible actuator micromotor operating at 24-230v 50 Hz.
- Power absorption : 10.5 VA.
- Continuous operation : 100%.
- Rotation angle : 90/180°.
- Operating temperature : -10 / +65°C.
- Enclosure : IP 65.

STANDARD EQUIPMENT

- Internal manual command.
- ISO 5211, din 3337 approved coupling bracket.
- Two auxiliary and run CA contacts.

OPTIONAL

- Lever with manual positioning with inox flask.
- Tension : different of 230V.
- Electric resistance.
- Rele'.
- Potentiometer (0-1000 Ohm).
- Electric regulation cards
- 4-20mA 0-10V with a 24V actuator.
- Visible positioning indicator.
- Block of security.
- Coupling with valves of not our production.

NOTE

Actuators with special voltage ratings are also available for quotation on request.

Attuatore pneumatico INOX a semplice e a doppio effetto

Pneumatic actuator double acting and spring return

Pneumatische Antrieb L/L und L/F

Verin pneumatique à simple ou double effet

Actuador neumático simple y doble efecto

AISI 304

art. **139H-DE**

art. **139 I-SE**



AISI 304

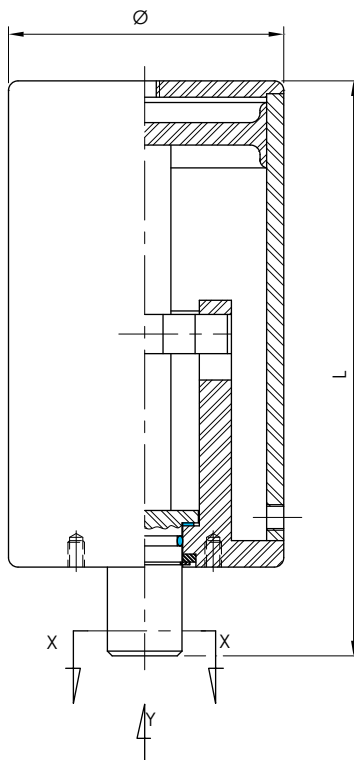
VALORI DI COPPIA (Nm) PER PRESSIONE TORQUE MOMENTS VALUES (Nm) FOR PRESSIONS					
139 H - DE					
ØxL	DN	3 bar	4 bar	5 bar	6 bar
85x174	25 ÷ 100	30	40	50	60
139 I - SE					
ØxL	DN	5 bar	6 bar	7 bar	8 bar
85x174	25 ÷ 100	25	50	75	100

Apertura / Opening : 90°

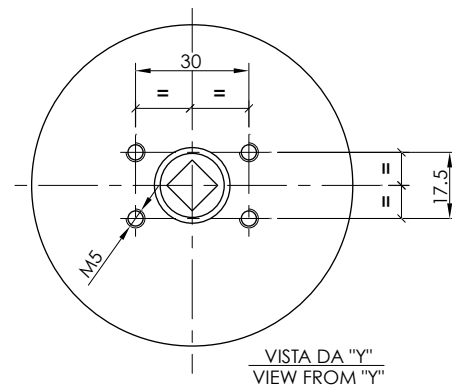
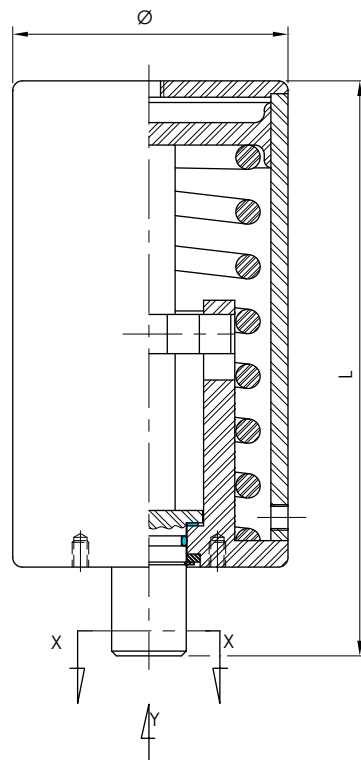
Pressione massima / Working pressure : 10 Bar

Temperatura di esercizio / Working temperature: -10°C +140°C

139 H - DE
ATTUATORE PNEUMATICO DOPPIO EFFETTO
DOUBLE ACTING PNEUMATIC ACTUATOR



139 I - SE
ATTUATORE PNEUMATICO SEMPLICE EFFETTO
SPRING RETURN PNEUMATIC ACTUATOR



Attuatore pneumatico INOX a semplice e a doppio effetto

Pneumatic actuator double acting and spring return

Pneumatische Antrieb L/L und L/F

Verin pneumatique à simple ou double effet

Actuador neumático simple y doble efecto

art. **139H1-DE**

art. **139 I1-SE**

AISI 304

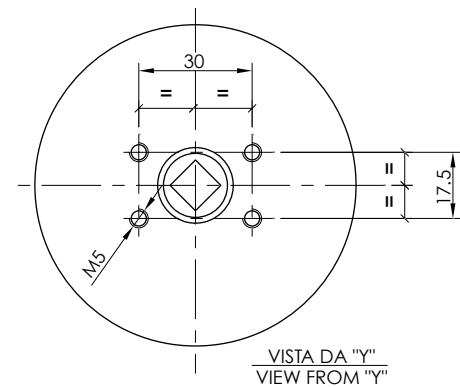
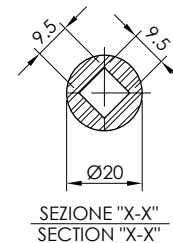
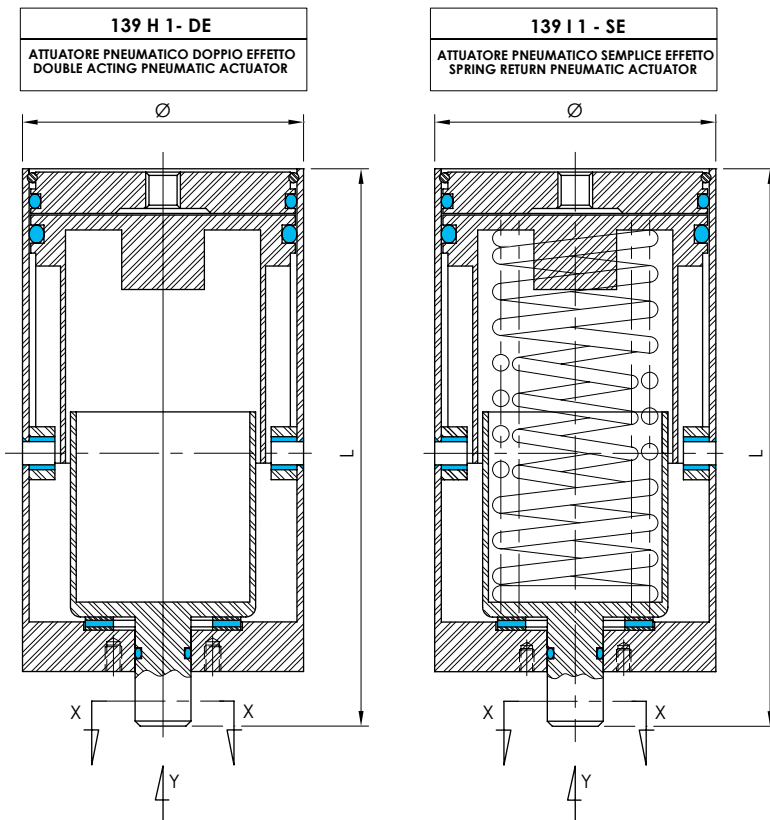
VALORI DI COPPIA (Nm) PER PRESSIONE TORQUE MOMENTS VALUES (Nm) FOR PRESSIONS					
139 H 1 - DE					
ØxL	DN	3 bar	4 bar	5 bar	6 bar
133x300	125 ÷ 200	100	120	150	160
139 I 1 - SE					
ØxL	DN	5 bar	6 bar	7 bar	8 bar
133x300	125 ÷ 200	35	70	105	140

Apertura / Opening : 90°

Pressione massima / Working pressure : 10 Bar

Temperatura di esercizio/ Working temperature: -10°C +140°C

AISI 304



Box IP65 con 1 elettrovalvola + 2 micro meccanici o induttivi

Box micro with 2 mechanical microswitches or with 2 proximity sensors and solenoid valve

Top mit 2 Endschaltern oder Näherungsinitiatoren und Magnetventil

Boîtier électrique inox IP65 avec 2 micro-contacts ou détecteurs de proximité + 1 electrovanne

Capsula de manobra inox IP 65 con 2 micros o detectores + 1 electrovalvula

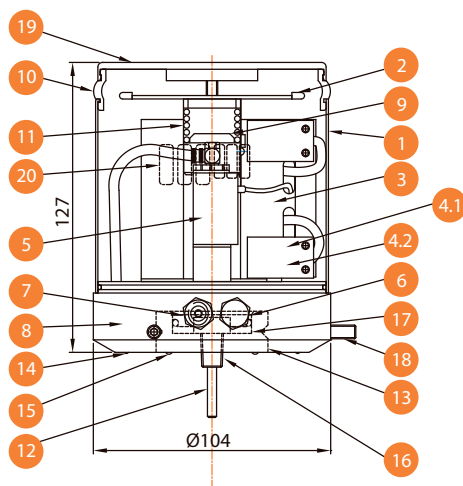
art. 139L

TECHNICAL DATA	SOLENOID VALVE	SENSOR
SINGLE ACT art. 139 LSE	1	1 - 2
DOUBLE ACT art. 139 LDE	2	2
OPERATING TEMPERATURE	70 °C	
MEDIUM LUBRIFICANT COMPRESSED AIR	INERT GAS	
PNEUMATIC CONNECTION	G 1/8"	
WORKING PRESSURE	1.5 ÷ 7 bar	
AIR FLUX	200 NI	
PROTECTION GRADE	IP 66	
ELECTRONIC CONNECTION	24 V DC - 24 / 110 / 220 V AC	
JOURNEY	MIN. 3 mm MAX. 70 mm	
BODY	AISI 304	



art. 139L

attuatore / actuator



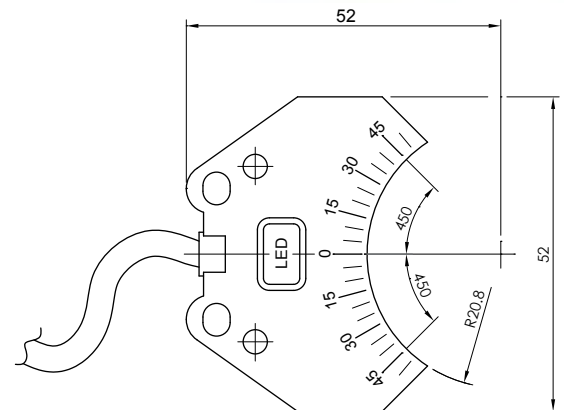
Item	Parts name	Q'TY	Material
1	Cover	1	St.St 304
2	LED Light	1	
3	Switch bracket	1	St.St 304
4.1	Proximity sensor	2	3A 125VAC/30VDC
4.2	Micro switch	2	3A 125VAC/30VDC
5	Electrovalve	1	DC24 3.0W/C110V/AC220V
6	E/N connect piece	1	St.St 304
7	Air connection	1	Cu
8	Air manifold	1	P.O.M / St.St 304
9	House	1	St.St 304
10	Light screen	1	PC
11	Spring	1	St.St 304
12	Sensor pin	1	St.St 304
13	Plate	1	St.St 304
14	O-Ring	1	NBR
15	O-Ring	1	NBR
16	Adapter (3/8" NPT)	1	St.St 304
17	O-Ring	1	NBR
18	Set screw	3	St.St 304
19	Top cover	1	St.St 304
20	PCB board	6	

Sensore induttivo

Proximity switch
SV-ZB- Doppel -INI (NI)
Double détecteur
Doble detectore

 art. **139L1**

PROXIMITY SWITCH	
RATED OPERATING DISTANCE	3 mm
INSTALLATION	EMBEDDABLE
OUTPUT TYPE	3-WIRE
SWITCHING ELEMENT FUNCTION	PNP DUAL MAKE FUNCTION
ASSURED OPERATING DISTANCE	0 ÷ 2.43 mm
KIND OF VOLTAGE	DC
OPERATING VOLTAGE	10 ÷ 30 V
NO-LOAD SUPPLY CURRENT	≤ 25 mA
REVERSE POLARITY PROTECTION	ALL CONNECTIONS
SHORT-CIRCUIT PROTECTION	PULSING
POWER	0 ÷ 200 mA
OFF-STATE CURRENT	0 ÷ 0.5 mA TYP
OPERATING VOLTAGE DISPLAY	LED GREEN
INDICATION OF THE SWITCHING STATE	LED YELLOW
AMBIENT TEMPERATURE	-25° ÷ 70° C
HOUSING MATERIAL	PBT
SENSING FACE	PBT
PROTECTION	IP 67



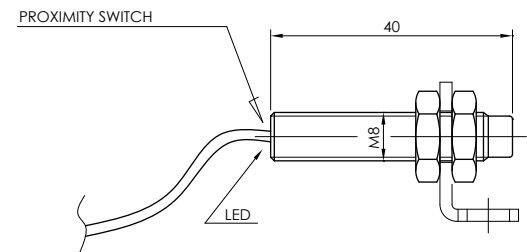
Ver. 04.18

Sensore induttivo M8

Proximity switch
Endlagenrückmeldeschalter
Mini détecteur
Detectore de proximidad

 art. **139L2**

PROXIMITY SWITCH	
HOUSING MATERIAL	AISI 316 STAINLESS STEEL
RATED OPERATING DISTANCE	2 mm
OPERATING VOLTAGE	0 ÷ 60 V
SWITCHING FREQUENCY	0 ÷ 1200 Hz
REVERSE POLARITY PROTECTION	TOLERANT
SHORT-CIRCUIT PROTECTION	PULSING
VOLTAGE DROP	≥ 5 V
POWER	2 ÷ 100 mA
OFF-STATE CURRENT	0 ÷ 0.5 mA TYP
INDICATION OF THE SWITCHING	LED YELLOW
AMBIENT TEMPERATURE	-25° ÷ 70° C
SENSING FACE	PBT
PROTECTION	IP 67



Supporto attuatore per valvola a farfalla

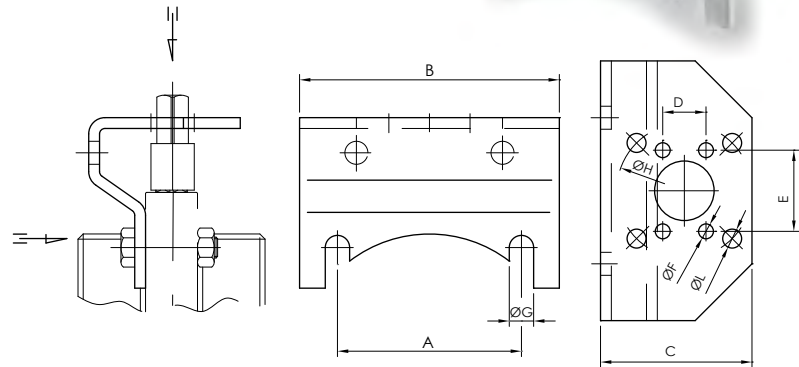
Butterfly valve holding device
Haltekonsole für scheibeventil
Support de verin pour vanne papillon
Soporte actuador válvula mariposa

art. **139M1**

AISI 304



DN	A	B	C	D	E	F	G	H	L
15	46.6	83	73	17.6	30.3	6	9	42	6.5
20	46.6	83	73	17.6	30.3	6	9	42	6.5
25	51.5	78	52	17.6	30.3	6	9	42	6.5
32	55	82	52	17.6	30.3	6	9	42	6.5
40	58.5	86	52	17.6	30.3	6	9	42	6.5
50	67.5	96	52	17.6	30.3	6	9	50	7.5
65	79.5	106	52	17.6	30.3	6	9	50	7.5
80	90	117	57	17.6	30.3	6	9	50	7.5
100	104.5	131	57	17.6	30.3	6	9	50	7.5
125	85.6	120	120	17.6	30.3	6	9	50	7.5
200	134.2	120	120	17.6	30.3	6	9	50	7.5



Ver. 04.18

Flangia ISO 5211 per attuatori su valvole a sfera 2 e 3 vie

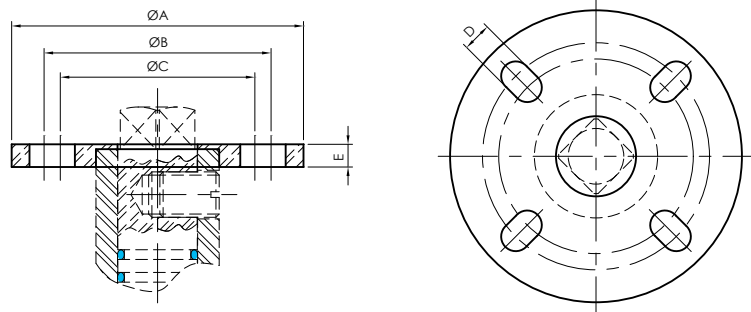
Iso 5211-DIN3337 flange for actuator
Flansch für Drehantrieb ISO 5211-DIN3337
Bride pour verin, ISO 5211 pour vanne à boule 2-3 voies
Brida ISO 5211 por neumático válvula de bola 2-3 vias

art. **139P**

AISI 304



DN	A	B	C	D	E	F
1/4"	65	50	42	7	6	F05
3/8"	65	50	42	7	6	F05
1/2"	65	50	42	7	6	F05
3/4"	90	70	50	9	8	F07
1"	90	70	50	9	8	F07
1 1/4"	90	70	50	9	8	F07
1 1/2"	90	70	50	9	8	F07
2"	90	70	50	9	8	F07
2 1/2"	125	102	70	11	8	F010
3"	125	102	70	11	8	F010
4"	125	102	70	11	8	F010
5"	125	102	70	11	8	F010



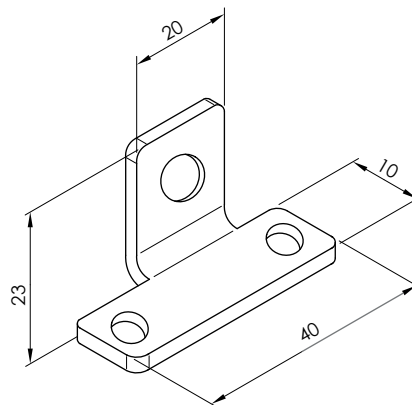
Ver. 04.18

Staffa supporto per proximity switches

Holding device -proximity switches
Halteblech
Platine fixation pour détecteur
Soporte por detectores

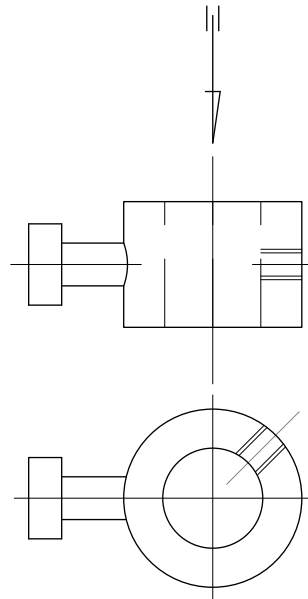
art. **139P1**

AISI 304



Supporto per sensore

Sensor support
Sensor-Halter
Support de capteur
Soporte para Sensor



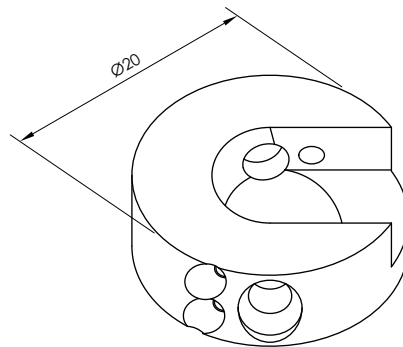
AISI 304


 art. **139P3**

Ver. 04.18

Supporto per sensore

Sensor support
Sensor-Halter
Support de capteur
Soporte para Sensor

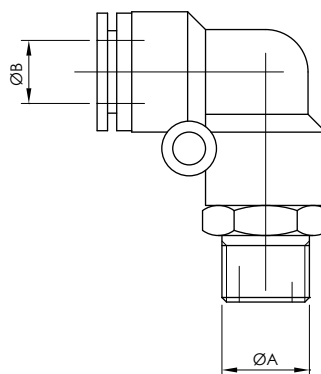

 art. **139P4**

Ver. 04.18

Attacco rapido per aria

Screw union
Schraubung
Raccord d'air gaz
Conexión de aire

DN	ØA	B
G 1/8" - 4	G 1/8"	4
G 1/8" - 6	G 1/8"	6
G 1/8" - 8	G 1/8"	8
G 1/8" - 10	G 1/8"	10
G 1/4" - 4	G 1/4"	4
G 1/4" - 6	G 1/4"	6
G 1/4" - 8	G 1/4"	8
G 1/4" - 10	G 1/4"	10
G 1/4" - 10	G 1/4"	12

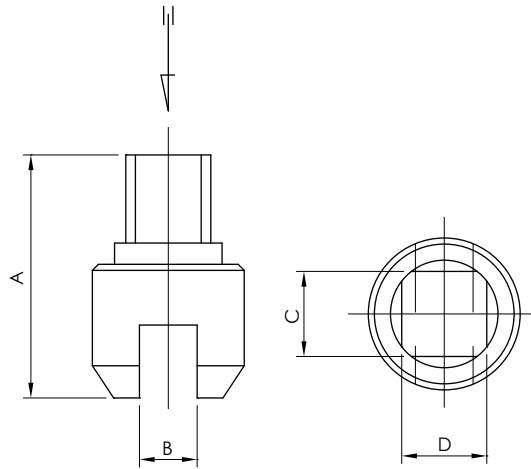

 art. **139P5**

Perno di collegamento

Pin connection
Pin-Anschluss
Axe de connexion
Pivote por enlace

 art. **139P6**

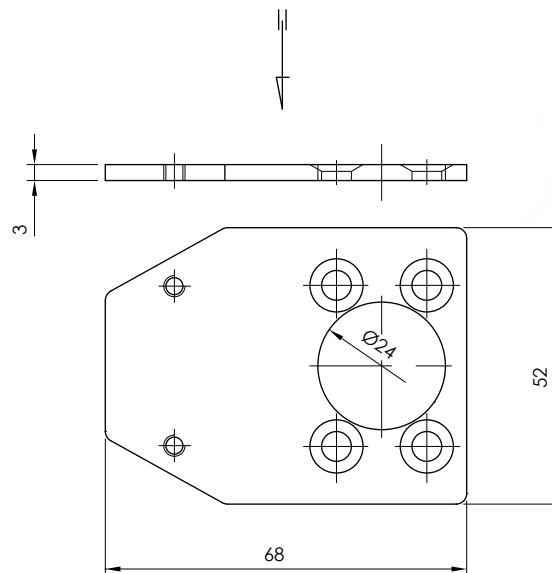
DN	A	B	C	D
15÷32	37	9.5	11	11
40÷60	40	9.5	14	14
70÷150	43	9.5	17	17



Ver. 04.18

Supporto per sensore

Sensor support
Sensor-Halter
Support de capteur
Soporte para Sensor

 art. **139P8**


Ver. 04.18

Silenziatore per attuatore

Noise silencer
Schalldämpfer
Silencieux
Silenciador

 art. **139P9**

DN	ØA
G 1/8"	G 1/8"
G 1/4"	G 1/4"

